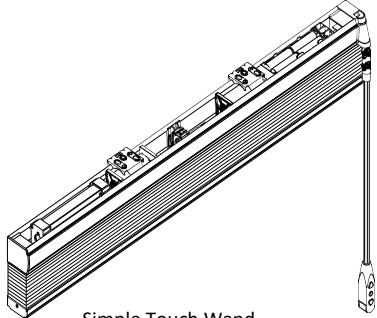


Simple Touch® Wand Cellular Shade User Guide

Installation

Identify your cellular shade and parts (your parts may vary, depending on the custom request, size of the headrail & shade you are purchasing.)

Shade width	Qty of brackets
W ≤ 36"	2
36" < W ≤ 48"	3
48" < W ≤ 72"	3
72" < W ≤ 96"	4
96" < W ≤ 120"	5



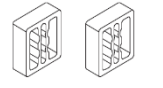
Simple Touch Wand Motorized Cellular Shade



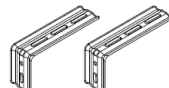
9/16" rail brackets



screws



Spacers (optional)



Extension brackets (optional)



Rechargeable battery pack

The cord length is 20".

Mounting brackets

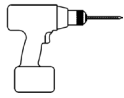
Screws

USB wall charger

80" USB-C cord

Rechargeable battery pack (*The default quantity of the charger and USB cord is 1 set per order. You can request more sets at no cost up to the same quantity as the rechargeable battery pack you ordered.)

Tools you may need (not included)



Drill with bits



Metal tape measure



Pen



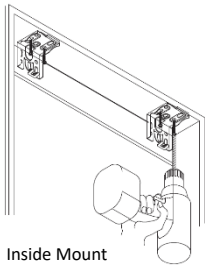
#4 x 3/4" flat head wood screw



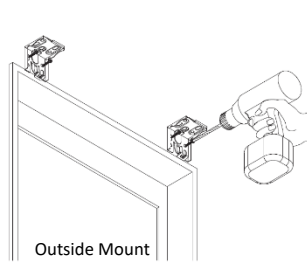
Screwdriver

Install the brackets

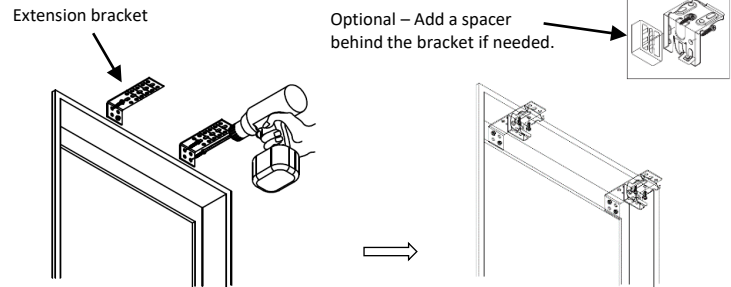
- Mark the bracket locations. Space the brackets evenly and make sure the brackets will not interfere with any mechanism or other internal headrail parts.
- Install the brackets using screws (included) and tighten them completely.
- Make sure all brackets are aligned and level with each other.
- Install the shade with extension brackets (optional)
 - Install the extension bracket with at least 2 screws.
 - Attach the hidden brackets to the extension brackets with the screws.



Inside Mount



Outside Mount

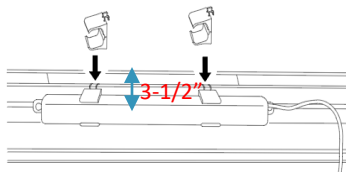


Extension bracket

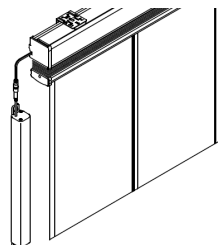
Optional – Add a spacer behind the bracket if needed.

Install the rechargeable battery pack

- Follow the user guide for the Simple Touch rechargeable battery pack.
- The rechargeable battery pack can either be hooked onto the back side of the headrail or mounted to the wall or window frame.

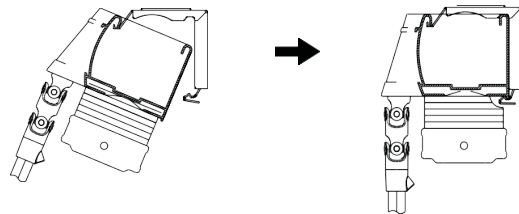


The minimum flush mounting space is 3-1/2" while using 9/16" headrail.



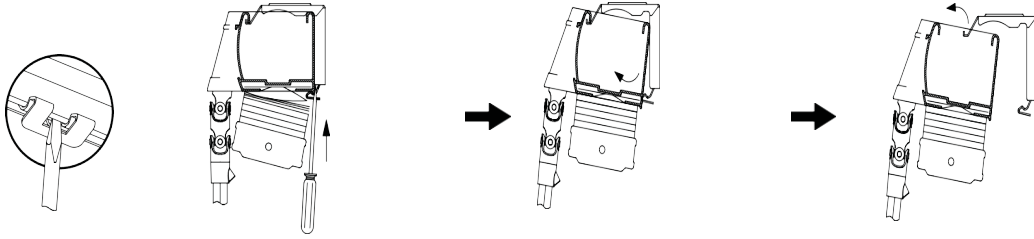
Attach the cell shade

- Position the headrail with the front lip resting on the top hooks of all the brackets.
- Push the bottom of headrail firmly upward and toward the window until the groove at the bottom of the headrail snaps into place.

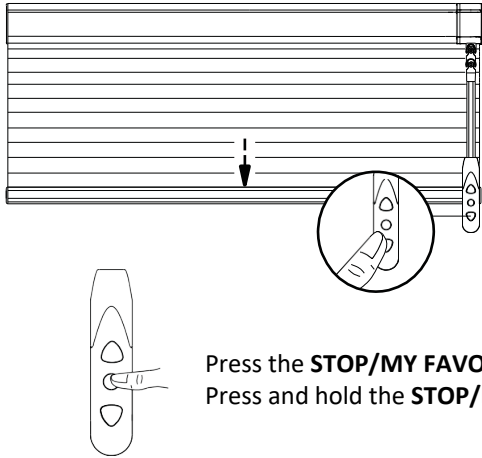


How to remove the shade from the brackets

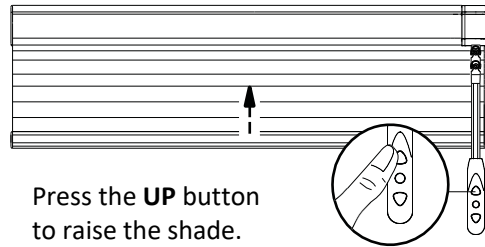
- Press the **UP** button to raise the shade completely.
- Use a flat screw to push the bracket tab toward to the wall. Once you hear a “click”, then the shade will be released from the bracket.
- Repeat above step to release the shade from other brackets.



Operate the Simple Touch Wand Motorized Cellular Shade



Press the **DOWN** button to lower the shade.



Press the **UP** button to raise the shade.

Press the **STOP/My FAVORITE** button to stop the moving.
Press and hold the **STOP/My FAVORITE** button to stop the moving



Before set up the TOP and BOTTOM limits

- The bottom rail only travels while pressing the **UP** or **DOWN** button.
- Click the **STOP** button to stop the moving.

After set up the TOP and BOTTOM limits and Before set up “MY FAVORITE POSITION”

- Press and hold the **Up** or **Down** button for about 5 seconds, the shade will travel either to the top or bottom limit without pressing the buttons
- Click the **STOP** button to stop the moving.

After set up “MY FAVORITE POSITION”

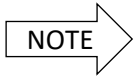
- Press and hold “**My Favorite**” button for 2-5 second, the bottom rail will travel to the Favorite position.

Care and Clean

- Wipe the shade periodically with a soft dust cloth or dusting mitt, or vacuum with a lowest speed.

Notes

- Do not spill water to the headrail and the wand.
- Do not clean or operate the motorized shade with wet hands
- The warranty of your shades does not cover damage caused by improper cleaning.
- The motorized shade is for indoor use only.
- Do not use the motorized shades at the wet area.



This Simple Touch® Wand motorized shade is already programmed with the TOP and BOTTOM Limits. Option to program "My Favorite Position" followed with the instructions below. Enjoy your new motorized shade!

Set up My Favorite Position

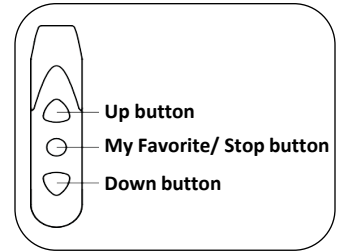
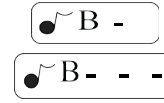


Operate the shade to your favorite position

Press "My Favorite" button for 5 seconds until you hear a long "B".

Press "My Favorite" button again for 3 seconds, then hear 3 short "B".

Set up "My Favorite Position" is done.



To reprogram this motorized shade, please follow the steps below.

Set Clear



Press all 3 buttons at the same time until you hear a long "B".



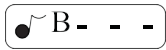
"Clear" is done.

Set up the TOP Limit



Press and hold the "UP" button to move the shade to very top.

Press both "UP" & "My Favorite" buttons at the same time for 5 seconds until you hear 3 short "B".



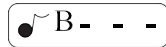
Set up the "TOP Limit" is done.

Set up the Bottom Limit



Press and hold the "Down" button to move the shade all the way down to the dropped height.

Press both "Down" & "My Favorite" buttons at the same time for 5 seconds until you hear 3 short "B".



Set up the "Bottom Limit" is done.

To change "My Favorite Position"

- Clear all limits setting by pressing all 3 buttons at the same time until you hear a long "B".
- Follow the above programming to "Set up the TOP Limit", "Set up the Bottom Limit", and then "Set up My Favorite Position".